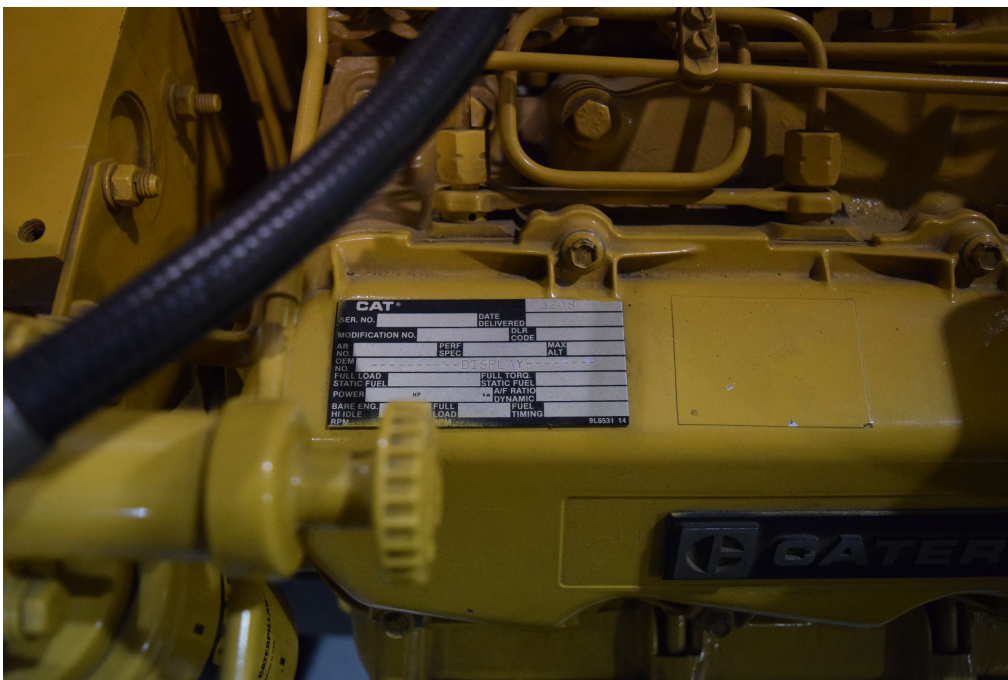


# Caterpillar Diesel Engine Serial Number

## How to Find a Caterpillar Engine Serial Number

Most engine serial numbers can be found on the data plate, which is typically on the driver side of the valve cover. The data plates for a certain engine type can be found in different places, depending on the model. Caterpillar, however, is pretty consistent with their location.



## Caterpillar Engine Serial Number Format

All Caterpillar ESN's have a similar format, which makes them pretty easy to identify. They all begin with a three number/letter prefix, which is then followed by 7 digits. The prefixes will correspond to a particular model, and usually to a certain subset of the model.

<b>Caterpillar ESN Prefixes by Model</b>	
3406	92U
3406B	2EK, 3ZJ, 4CK, 4MG, 5KJ, 7FB, 8TC
3406C	3ZJ, 4CK, 5KJ, 8PN
3406E	1LW, 2WS, 5DS, 5EK, 6TS
C7	KAL, C7S
C12	1YN, 2KS, 8YF, 9NS, 9SM, CPD, GEP, MBL, TME
C15 and C15 ACERT	6NZ, 9NZ, B5R, BXS, EGH, JEP, KRA, MBN, MXS, NXS, RKS, SDP, TRB
C16	7CZ